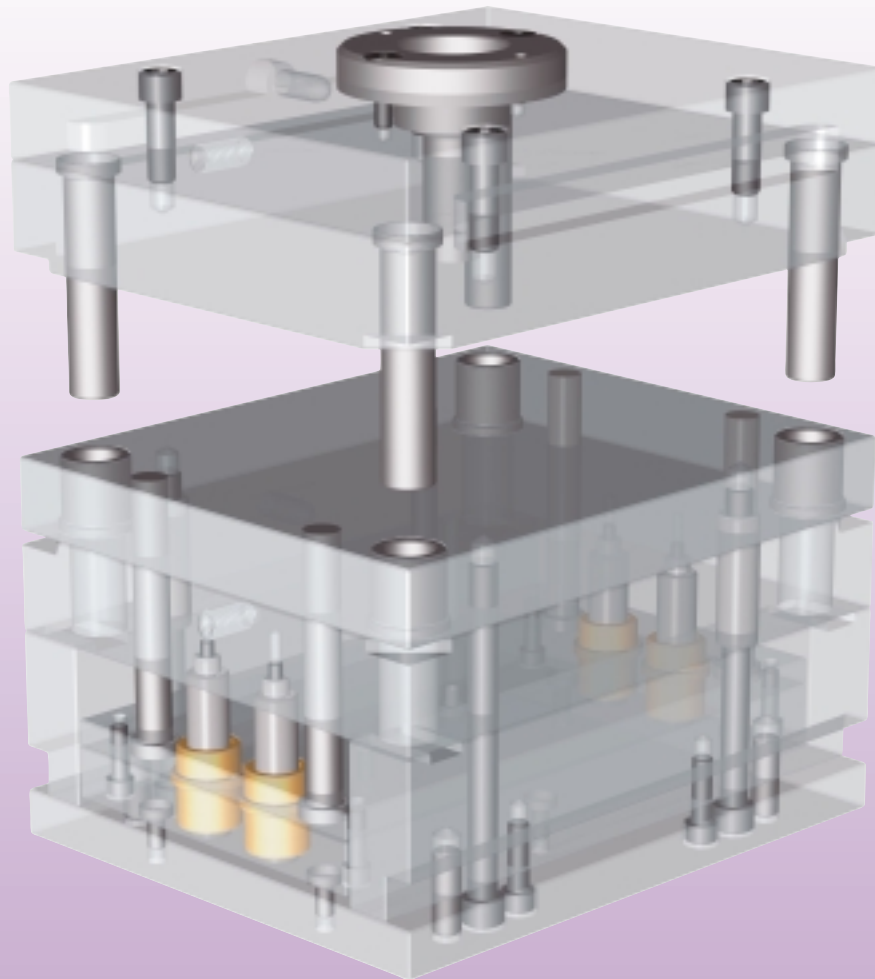


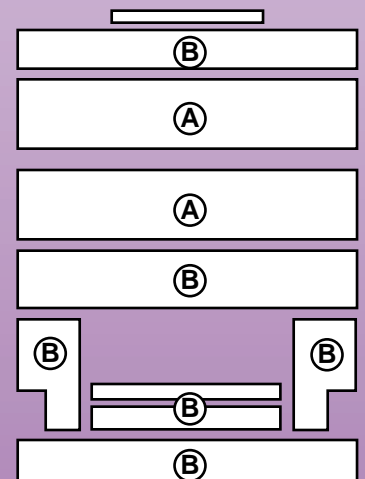


E-Series MOLD BASES



Features of the E-Series Mold Bases

- #3 Steel A & B plates for maximum strength and stability plus optimum polishing and texturing.
- Pry slots between A and B plates and between B plate and Support Plate.
- Vented leader pins.
- Eyebolt locations in Top Clamp Plate and Support Plate allow E-Bases to be lifted in two orientations.
- Supplied with the DMS standard SSP guided ejection system ensuring accuracy and extra support.
- “SB” series solid aluminum bronze guided ejector bushings.
- Return pin locations to industry standards.
- Machined for sprue puller pin, except in B plate.



Ⓐ AISI : P20

Ⓑ AISI : 1040



E-Series MOLD BASES

| A | B | C | H | CATALOG # |
|---|---|---|---|-----------|
|---|---|---|---|-----------|

7-7/8 x 7-7/8

| | | | | |
|-------|-------|-------|--------|-------------|
| 7/8 | 7/8 | 2-1/2 | 7-7/8 | E-0808-0707 |
| | 1-3/8 | 2-1/2 | 8-3/8 | E-0808-0713 |
| | 1-7/8 | 2-1/2 | 8-7/8 | E-0808-0717 |
| | 2-3/8 | 2-1/2 | 9-3/8 | E-0808-0723 |
| | 2-7/8 | 3 | 10-3/8 | E-0808-0727 |
| 1-3/8 | 7/8 | 2-1/2 | 8-3/8 | E-0808-1307 |
| | 1-3/8 | 2-1/2 | 8-7/8 | E-0808-1313 |
| | 1-7/8 | 2-1/2 | 9-3/8 | E-0808-1317 |
| | 2-3/8 | 3 | 10-3/8 | E-0808-1323 |
| | 2-7/8 | 3 | 10-7/8 | E-0808-1327 |
| 1-7/8 | 7/8 | 2-1/2 | 8-7/8 | E-0808-1707 |
| | 1-3/8 | 2-1/2 | 9-3/8 | E-0808-1713 |
| | 1-7/8 | 2-1/2 | 9-7/8 | E-0808-1717 |
| | 2-3/8 | 3 | 10-7/8 | E-0808-1723 |
| | 2-7/8 | 3-1/2 | 11-7/8 | E-0808-1727 |
| 2-3/8 | 7/8 | 2-1/2 | 9-3/8 | E-0808-2307 |
| | 1-3/8 | 2-1/2 | 9-7/8 | E-0808-2313 |
| | 1-7/8 | 2-1/2 | 10-3/8 | E-0808-2317 |
| | 2-3/8 | 3 | 11-3/8 | E-0808-2323 |
| | 2-7/8 | 3-1/2 | 12-3/8 | E-0808-2327 |
| 2-7/8 | 7/8 | 3 | 10-3/8 | E-0808-2707 |
| | 1-3/8 | 3 | 10-7/8 | E-0808-2713 |
| | 1-7/8 | 3-1/2 | 11-7/8 | E-0808-2717 |
| | 2-3/8 | 3-1/2 | 12-3/8 | E-0808-2723 |
| | 2-7/8 | 4 | 13-3/8 | E-0808-2727 |

7-7/8 x 11-7/8

| | | | | |
|-------|-------|-------|--------|-------------|
| 7/8 | 7/8 | 2-1/2 | 7-7/8 | E-0812-0707 |
| | 1-3/8 | 3 | 8-7/8 | E-0812-0713 |
| | 1-7/8 | 3 | 9-3/8 | E-0812-0717 |
| | 2-3/8 | 3-1/2 | 10-3/8 | E-0812-0723 |
| | 2-7/8 | 3-1/2 | 10-7/8 | E-0812-0727 |
| 1-3/8 | 7/8 | 2-1/2 | 8-3/8 | E-0812-1307 |
| | 1-3/8 | 3 | 9-3/8 | E-0812-1313 |
| | 1-7/8 | 3 | 9-7/8 | E-0812-1317 |
| | 2-3/8 | 3-1/2 | 10-7/8 | E-0812-1323 |
| | 2-7/8 | 3-1/2 | 10-7/8 | E-0812-1327 |
| 1-7/8 | 7/8 | 2-1/2 | 8-7/8 | E-0812-1707 |
| | 1-3/8 | 3 | 9-7/8 | E-0812-1713 |
| | 1-7/8 | 3-1/2 | 10-7/8 | E-0812-1717 |
| | 2-3/8 | 3-1/2 | 11-3/8 | E-0812-1723 |
| | 2-7/8 | 3-1/2 | 11-3/8 | E-0812-1727 |
| 2-3/8 | 7/8 | 3 | 9-7/8 | E-0812-2307 |
| | 1-3/8 | 3 | 10-3/8 | E-0812-2313 |
| | 1-7/8 | 3-1/2 | 11-3/8 | E-0812-2317 |
| | 2-3/8 | 3-1/2 | 11-7/8 | E-0812-2323 |
| | 2-7/8 | 3-1/2 | 11-7/8 | E-0812-2327 |

9-7/8 x 8

| | | | | |
|-------|-------|-------|--------|-------------|
| 7/8 | 1-3/8 | 2-1/2 | 8-3/8 | E-1008-0713 |
| | 1-7/8 | 2-1/2 | 8-7/8 | E-1008-0717 |
| 1-3/8 | 1-3/8 | 2-1/2 | 9-3/8 | E-1008-1313 |
| | 1-7/8 | 3 | 10-3/8 | E-1008-1317 |
| 1-7/8 | 1-7/8 | 3-1/2 | 11-3/8 | E-1008-1717 |

9-7/8 x 11-7/8

| | | | | |
|-------|-------|-------|--------|-------------|
| 7/8 | 1-3/8 | 3 | 9-3/8 | E-1012-0713 |
| | 1-7/8 | 3 | 9-7/8 | E-1012-0717 |
| | 2-3/8 | 3-1/2 | 10-7/8 | E-1012-0723 |
| 1-3/8 | 1-3/8 | 3 | 9-7/8 | E-1012-1313 |
| | 1-7/8 | 3 | 10-3/8 | E-1012-1317 |
| | 2-3/8 | 3-1/2 | 11-3/8 | E-1012-1323 |
| 1-7/8 | 1-7/8 | 3-1/2 | 11-3/8 | E-1012-1717 |
| | 2-3/8 | 3-1/2 | 11-7/8 | E-1012-1723 |
| 2-3/8 | 2-3/8 | 3-1/2 | 12-3/8 | E-1012-2323 |

| A | B | C | H | CATALOG # |
|---|---|---|---|-----------|
|---|---|---|---|-----------|

9-7/8 x 16

| | | | | |
|-------|-------|-------|--------|-------------|
| 1-3/8 | 1-3/8 | 3 | 9-7/8 | E-1016-1313 |
| | 1-7/8 | 3 | 10-3/8 | E-1016-1317 |
| | 2-3/8 | 3-1/2 | 11-3/8 | E-1016-1323 |
| 1-7/8 | 1-3/8 | 3 | 10-3/8 | E-1016-1713 |
| | 1-7/8 | 3-1/2 | 11-3/8 | E-1016-1717 |
| | 2-3/8 | 3-1/2 | 11-7/8 | E-1016-1723 |
| 2-3/8 | 1-3/8 | 3 | 10-7/8 | E-1016-2313 |
| | 1-7/8 | 3-1/2 | 11-7/8 | E-1016-2317 |
| | 2-3/8 | 3-1/2 | 12-3/8 | E-1016-2323 |

10-7/8 x 12

| | | | | |
|-------|-------|-------|--------|-------------|
| 1-3/8 | 1-7/8 | 3 | 10-3/8 | E-1112-1317 |
| | 2-3/8 | 3-1/2 | 11-3/8 | E-1112-1323 |
| 1-7/8 | 1-7/8 | 3-1/2 | 11-3/8 | E-1112-1717 |
| | 2-3/8 | 3-1/2 | 11-7/8 | E-1112-1723 |

10-7/8 x 14

| | | | | |
|-------|-------|-------|--------|-------------|
| 1-3/8 | 1-7/8 | 3 | 10-3/8 | E-1114-1317 |
| | 2-3/8 | 3-1/2 | 11-3/8 | E-1114-1323 |
| 1-7/8 | 1-7/8 | 3-1/2 | 11-3/8 | E-1114-1717 |
| | 2-3/8 | 3-1/2 | 11-7/8 | E-1114-1723 |
| 2-3/8 | 1-7/8 | 3-1/2 | 11-7/8 | E-1114-2317 |
| | 2-3/8 | 3-1/2 | 12-3/8 | E-1114-2323 |

11-7/8 x 12

| | | | | |
|-------|-------|-------|--------|-------------|
| 1-3/8 | 1-3/8 | 3 | 9-7/8 | E-1212-1313 |
| | 1-7/8 | 3 | 10-3/8 | E-1212-1317 |
| | 2-3/8 | 3-1/2 | 11-3/8 | E-1212-1323 |
| 1-7/8 | 1-3/8 | 3 | 10-3/8 | E-1212-1713 |
| | 1-7/8 | 3 | 10-7/8 | E-1212-1717 |
| | 2-3/8 | 3-1/2 | 11-7/8 | E-1212-1723 |
| 2-3/8 | 1-3/8 | 3-1/2 | 11-3/8 | E-1212-2313 |
| | 1-7/8 | 3-1/2 | 11-7/8 | E-1212-2317 |
| | 2-3/8 | 3-1/2 | 12-3/8 | E-1212-2323 |

11-7/8 x 15

| | | | | |
|-------|-------|-------|--------|-------------|
| 1-3/8 | 1-7/8 | 3 | 10-3/8 | E-1215-1317 |
| | 2-3/8 | 3-1/2 | 11-3/8 | E-1215-1323 |
| 1-7/8 | 1-7/8 | 3 | 10-7/8 | E-1215-1717 |
| | 2-3/8 | 3-1/2 | 11-7/8 | E-1215-1723 |
| 2-3/8 | 1-7/8 | 3-1/2 | 11-7/8 | E-1215-2317 |
| | 2-3/8 | 3-1/2 | 12-3/8 | E-1215-2323 |

13-3/8 x 15

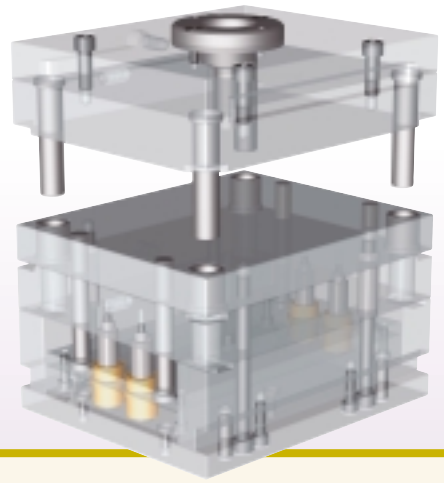
| | | | | |
|-------|-------|-------|--------|-------------|
| 1-3/8 | 1-7/8 | 3 | 10-3/8 | E-1315-1317 |
| | 2-3/8 | 3-1/2 | 11-3/8 | E-1315-1323 |
| 1-7/8 | 1-7/8 | 3 | 10-7/8 | E-1315-1717 |
| | 2-3/8 | 3-1/2 | 11-7/8 | E-1315-1723 |
| 2-3/8 | 1-7/8 | 3-1/2 | 11-7/8 | E-1315-2317 |
| | 2-3/8 | 3-1/2 | 12-3/8 | E-1315-2323 |

13-3/8 x 18

| | | | | |
|-------|-------|-------|--------|-------------|
| 1-7/8 | 1-7/8 | 3 | 10-7/8 | E-1318-1717 |
| | 2-3/8 | 3-1/2 | 11-7/8 | E-1318-1723 |
| 2-3/8 | 1-7/8 | 3-1/2 | 11-7/8 | E-1318-2317 |
| | 2-3/8 | 3-1/2 | 12-3/8 | E-1318-2323 |



E-Series MOLD BASES

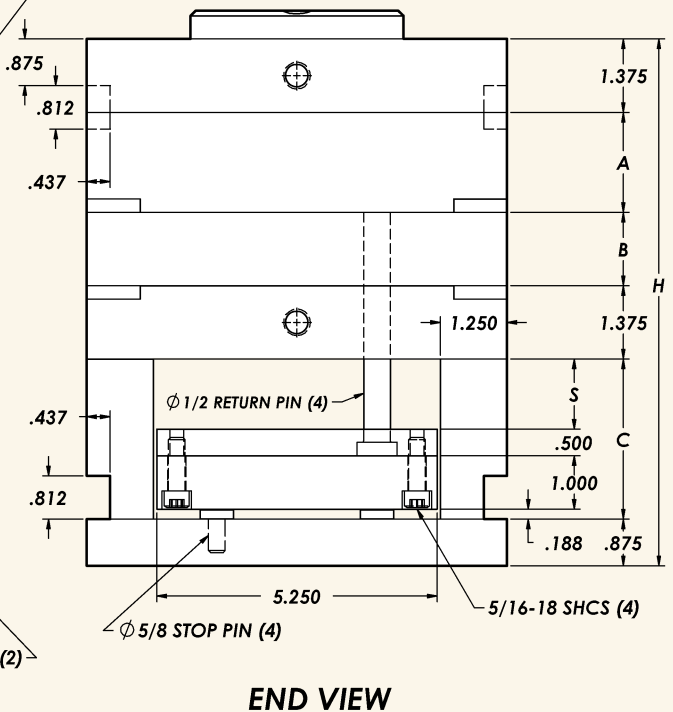
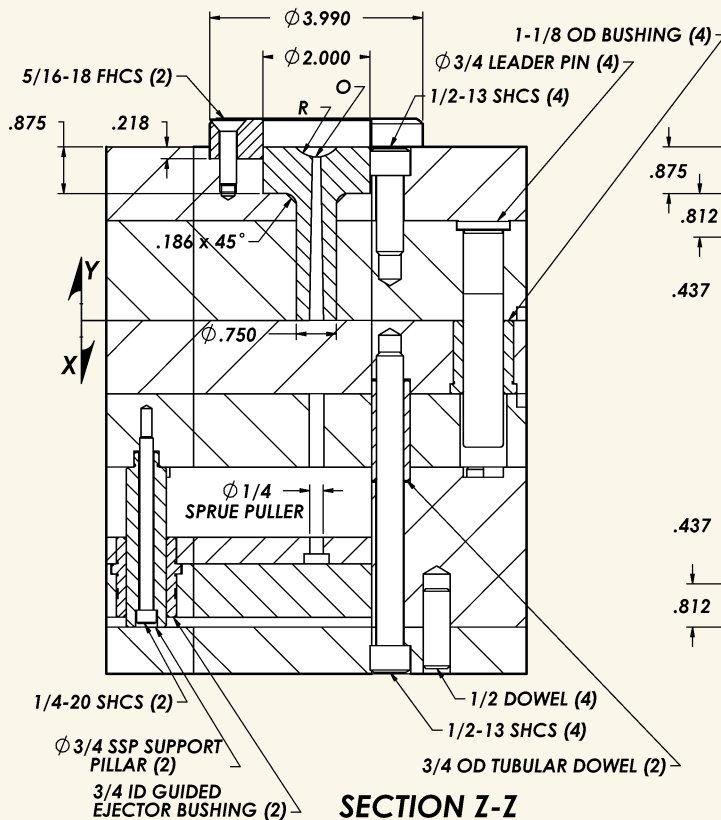
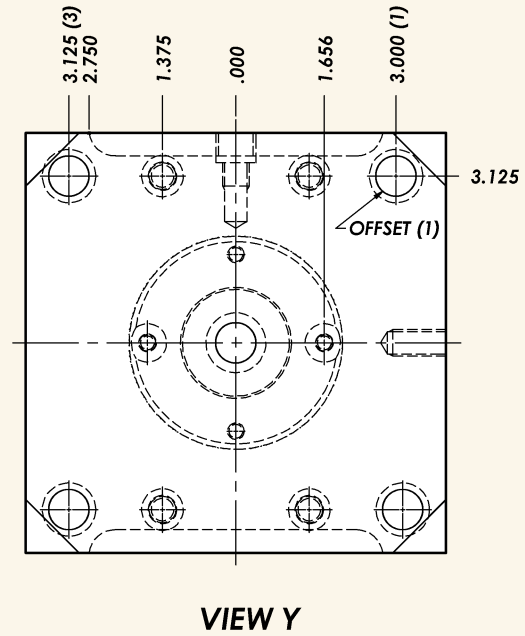
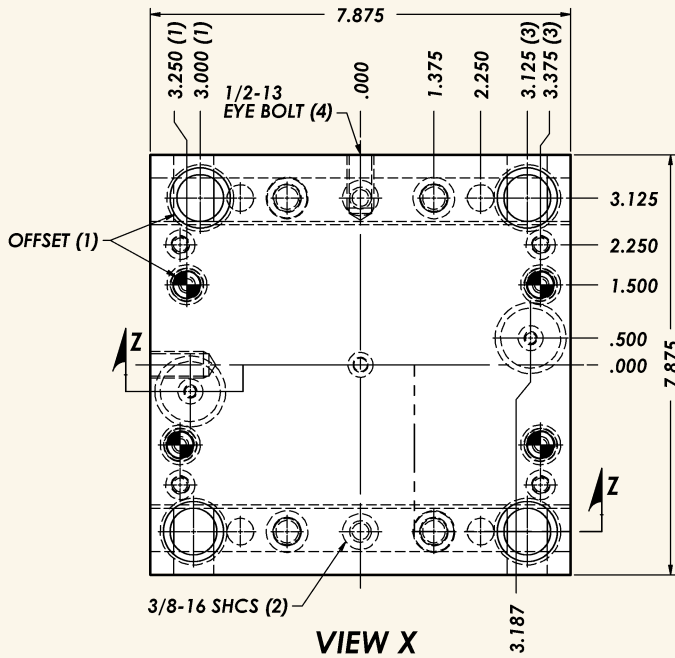


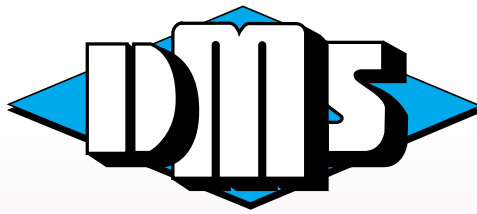
When ordering specify the following:

- Catalog number: **E0808**
- **A** plate thickness
- **B** plate thickness
- **O** sprue bushing orifice
- **R** sprue bushing radius
- Locating ring LR501 or LR504

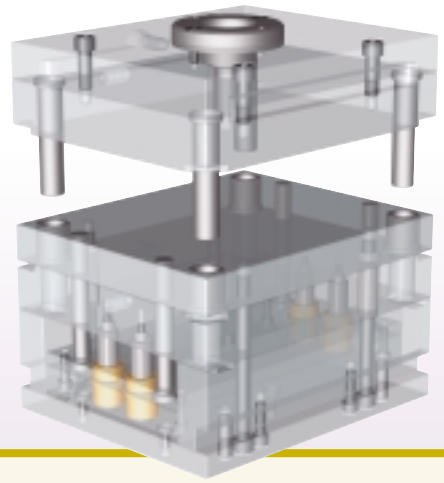
7⁷/₈ x 7⁷/₈

Example: E-0808-0707 O=5/32 R=1/2





E-Series MOLD BASES

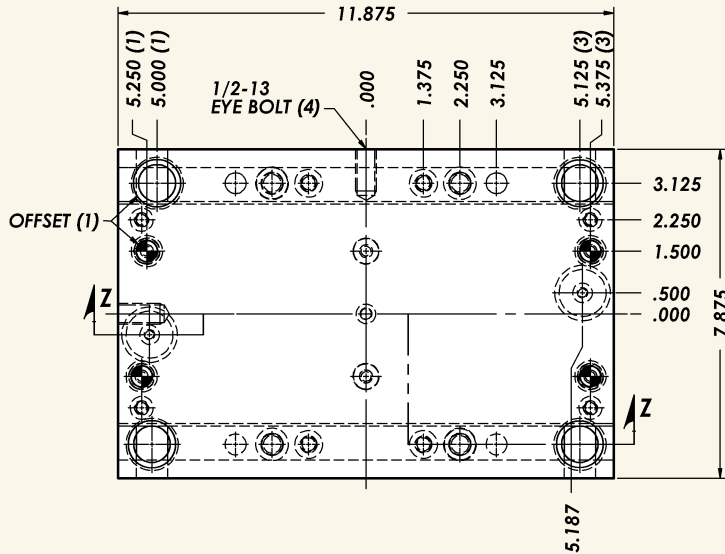


When ordering specify the following:

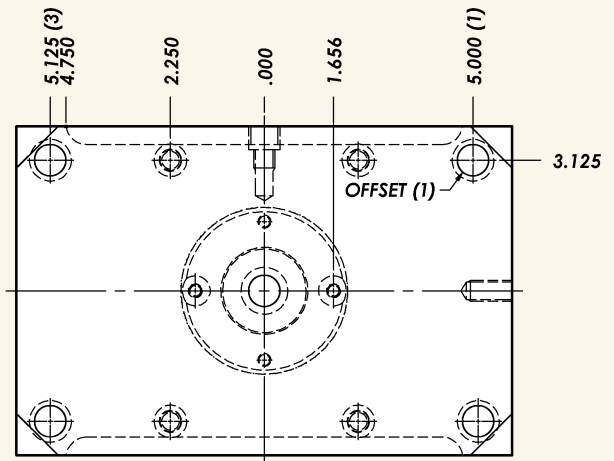
- Catalog number: **E0812**
- **A** plate thickness
- **B** plate thickness
- **O** sprue bushing orifice
- **R** sprue bushing radius
- Locating ring LR501 or LR504

7⁷/₈ x 11⁷/₈

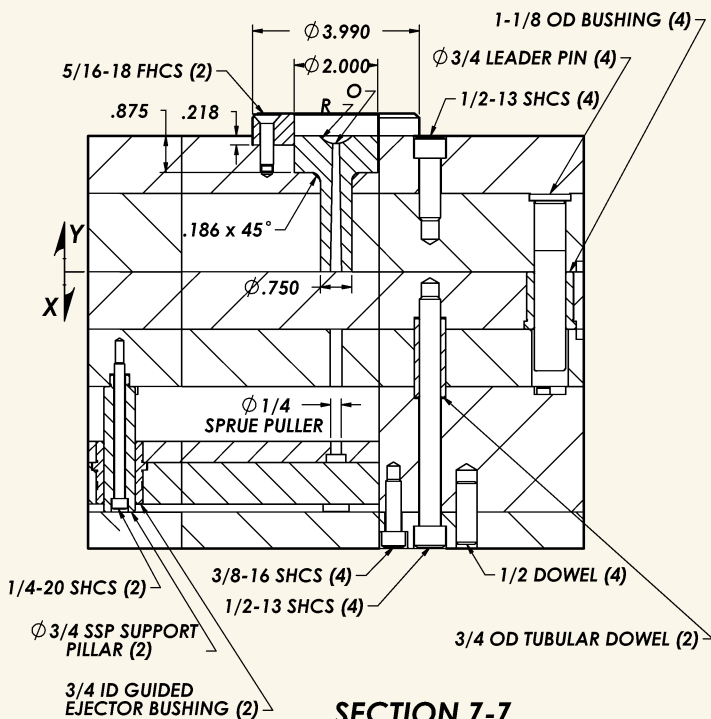
Example: E-0812-0707 O=5/32 R=1/2



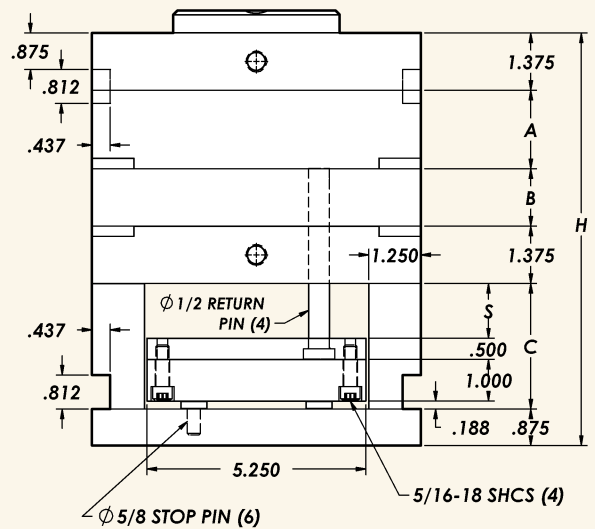
VIEW X



VIEW Y



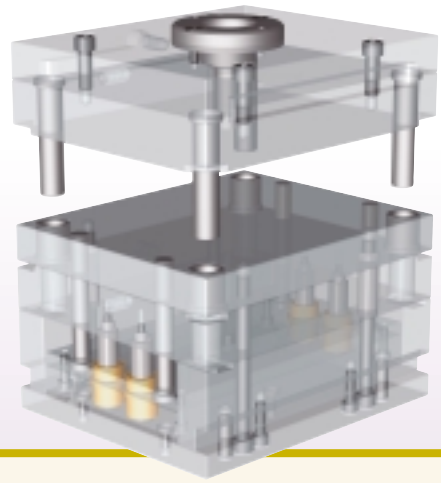
SECTION Z-Z



END VIEW



E-Series MOLD BASES

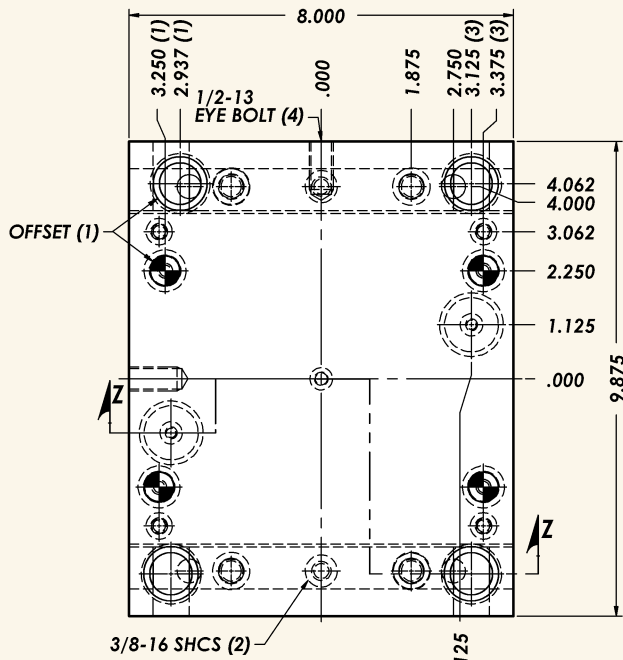


When ordering specify the following:

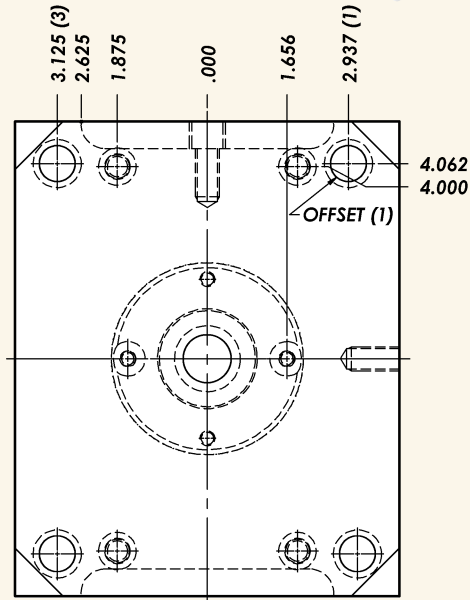
- Catalog number: **E1008**
- **A** plate thickness
- **B** plate thickness
- **O** sprue bushing orifice
- **R** sprue bushing radius
- Locating ring LR501 or LR504

9⁷/₈ x 8

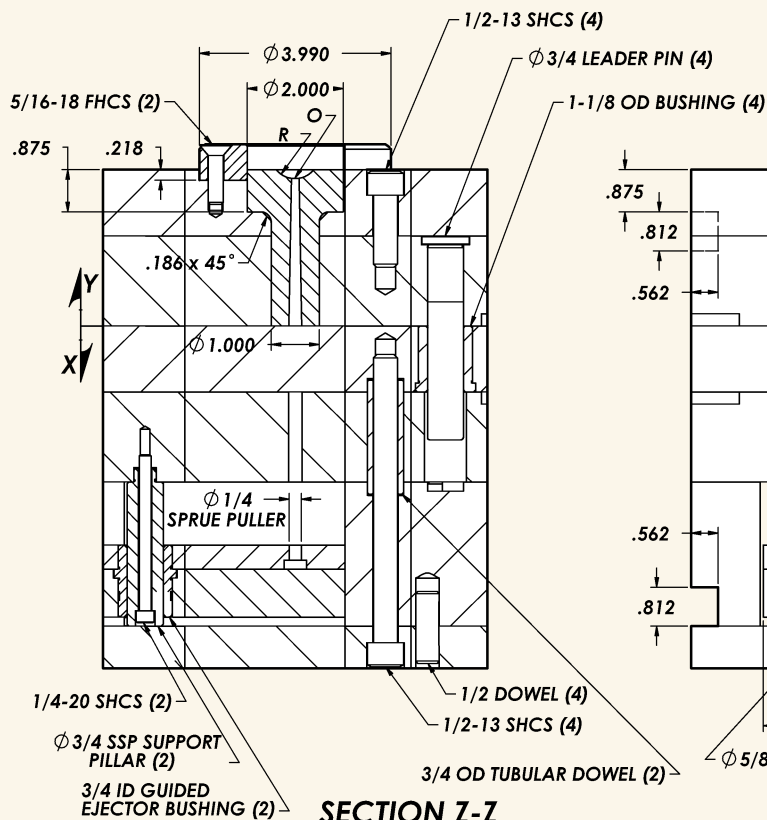
Example: E-1008-1313 O=7/32 R=1/2



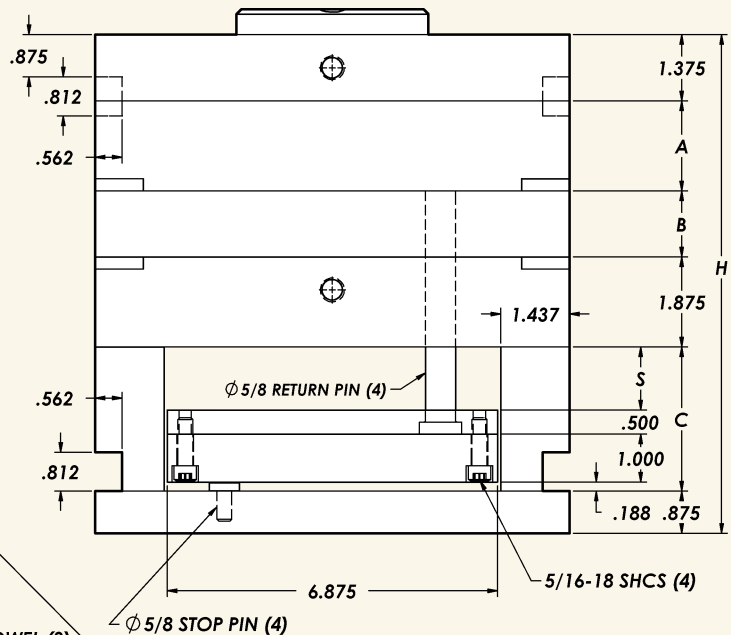
VIEW X



VIEW Y



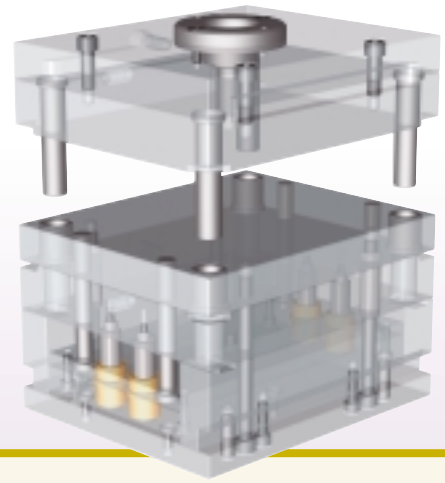
SECTION Z-Z



END VIEW



E-Series MOLD BASES

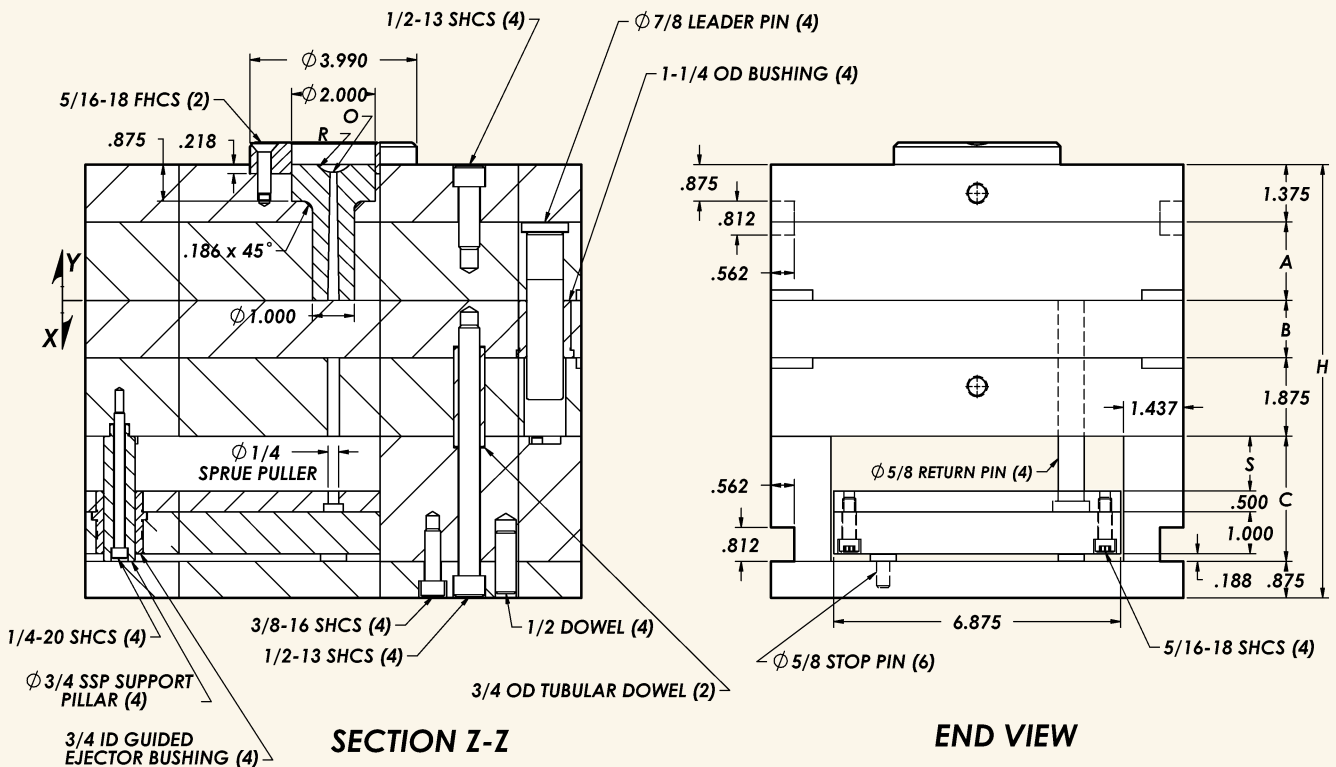
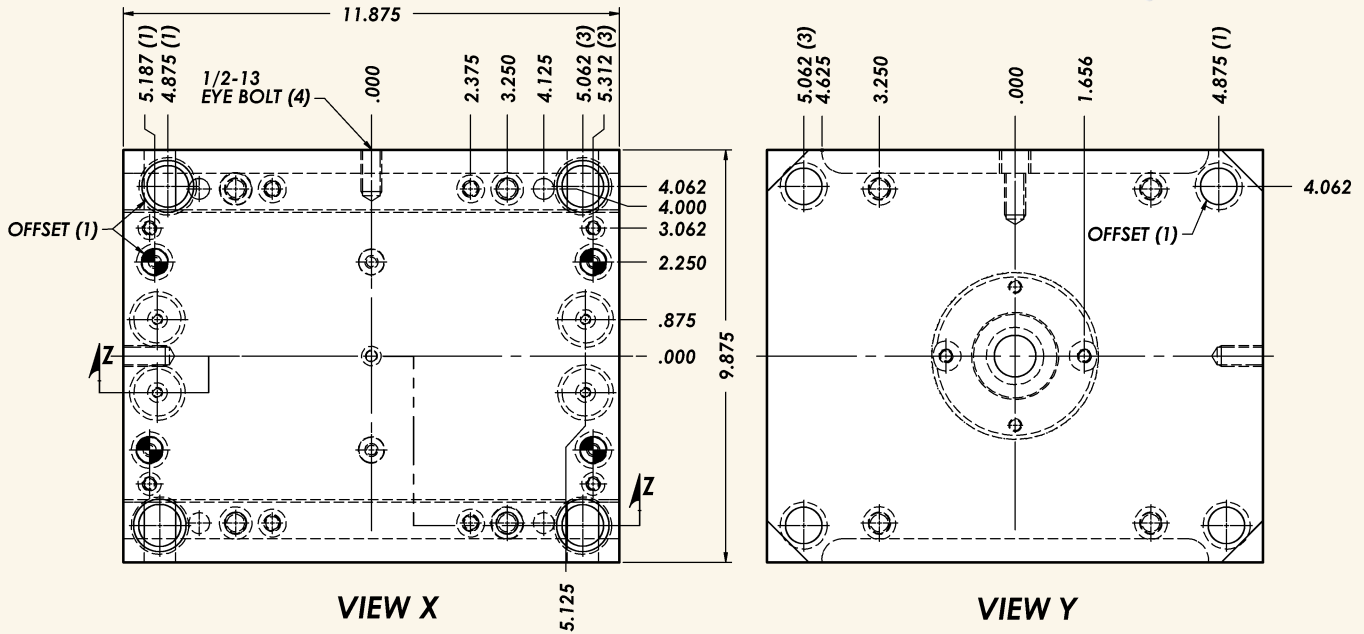


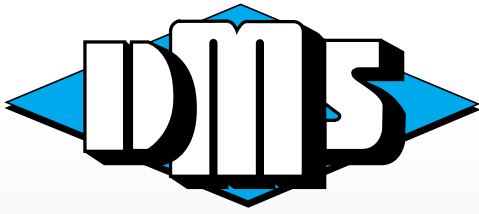
When ordering specify the following:

- Catalog number: **E1012**
- **A** plate thickness
- **B** plate thickness
- **O** sprue bushing orifice
- **R** sprue bushing radius
- Locating ring LR501 or LR504

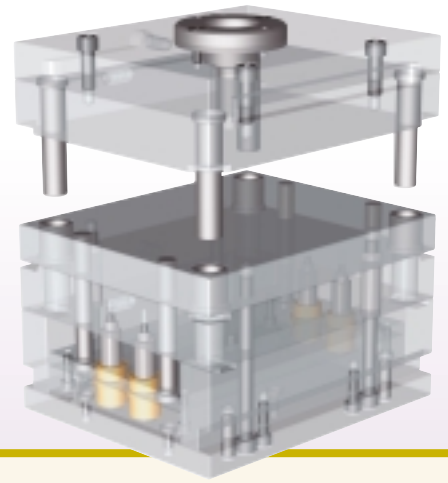
9⁷/₈ x 11⁷/₈

Example: E-1012-1313 O=7/32 R=1/2





E-Series MOLD BASES

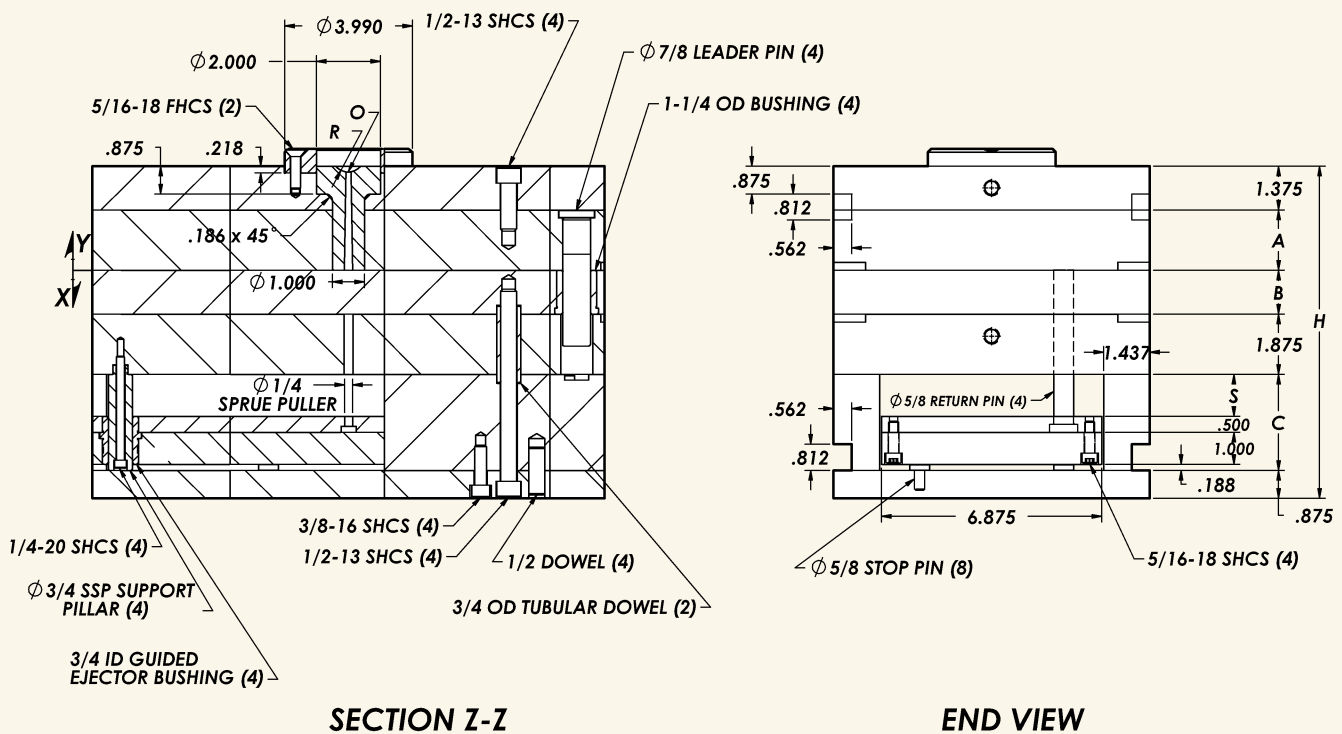
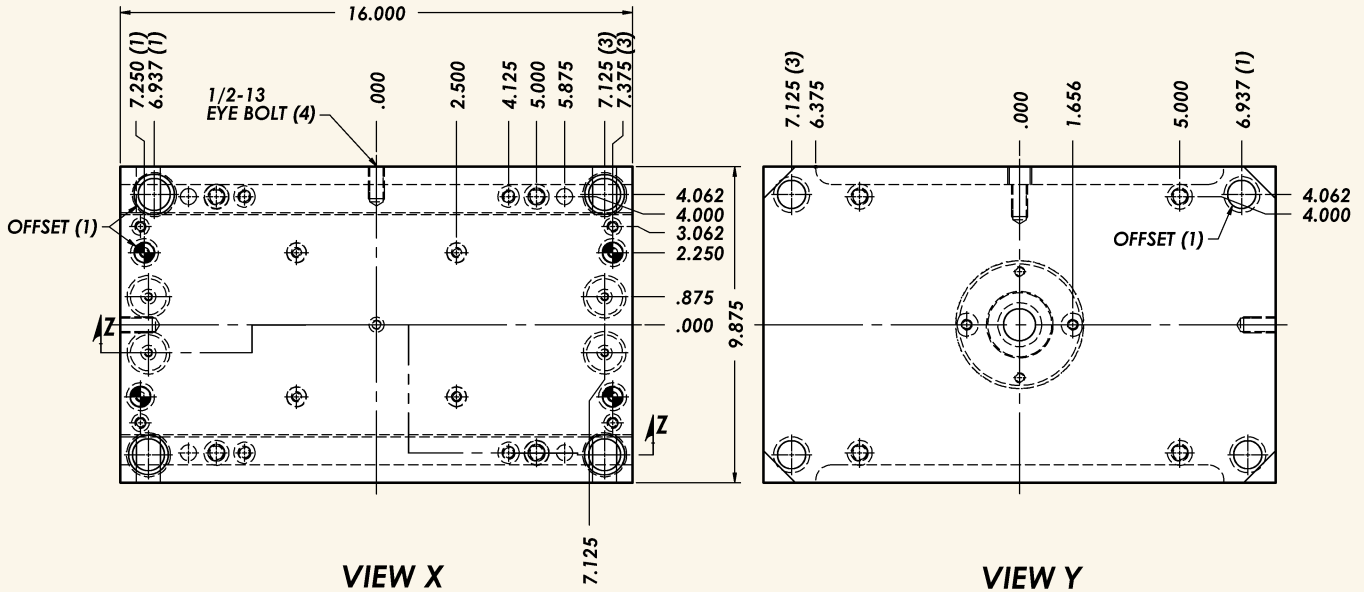


When ordering specify the following:

- Catalog number: **E1016**
- **A** plate thickness
- **B** plate thickness
- **O** sprue bushing orifice
- **R** sprue bushing radius
- Locating ring LR501 or LR504

9⁷/₈ x 16

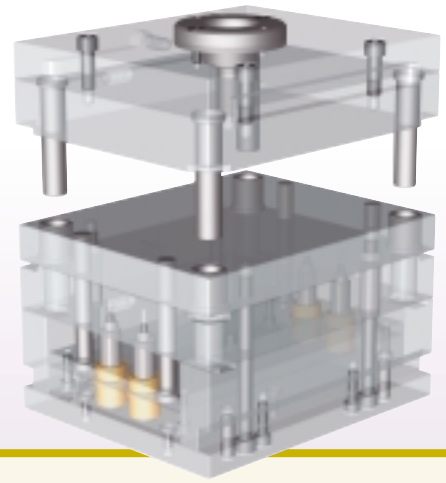
Example: E-1016-1313 O=7/32 R=1/2





E-Series MOLD BASES

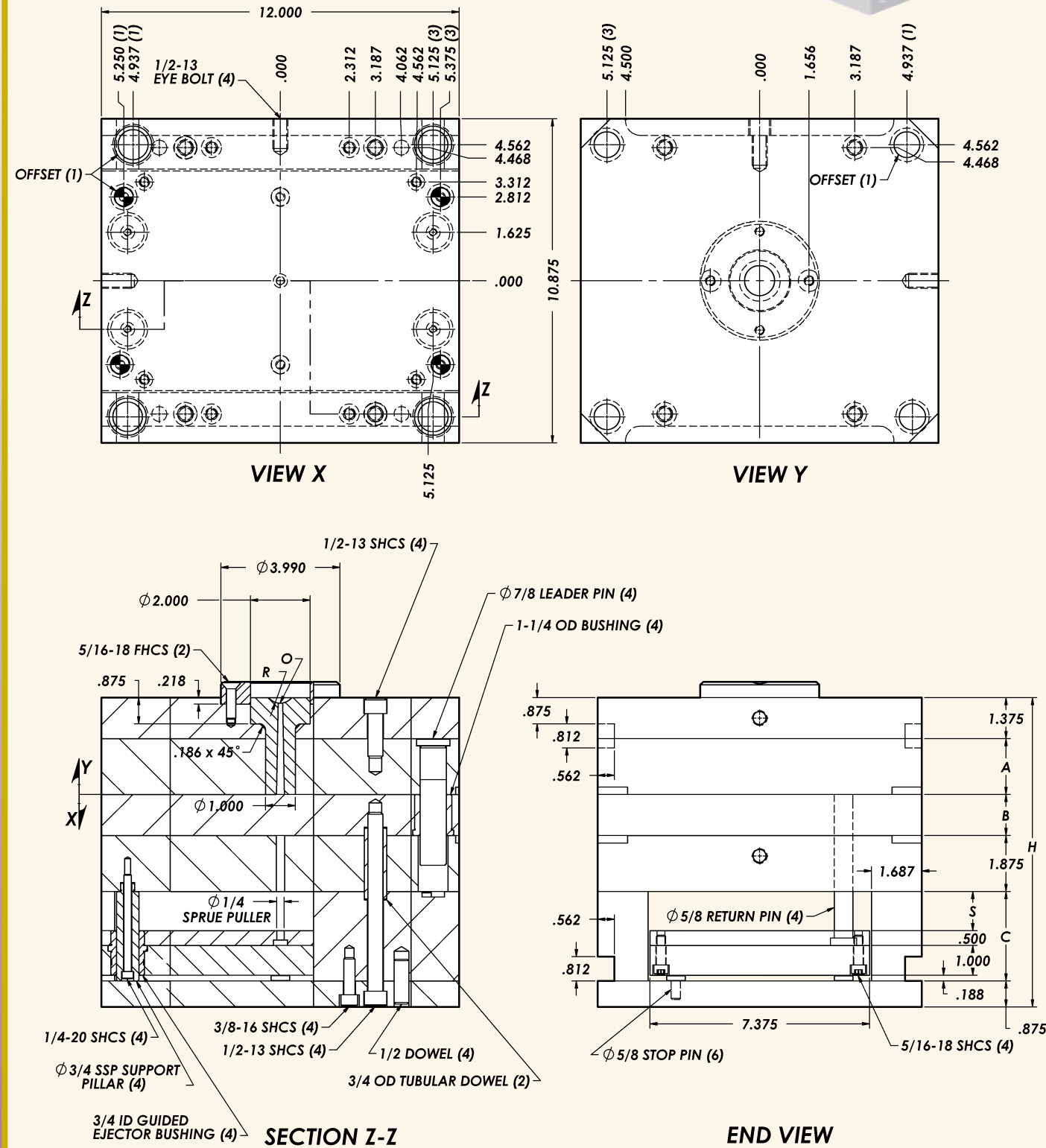
10⁷/₈ x 12

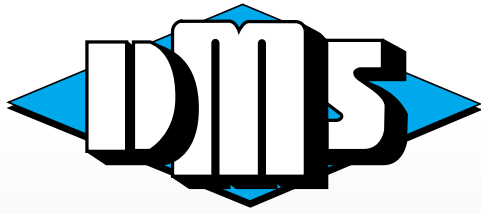


When ordering specify the following:

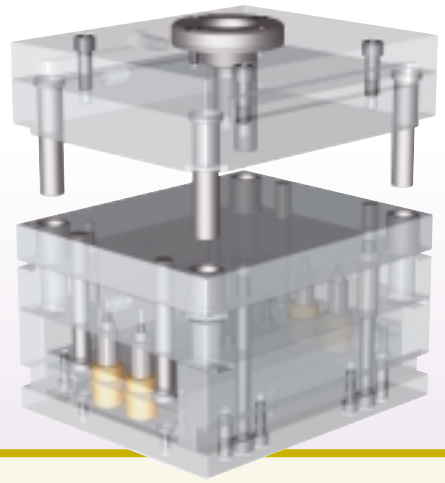
- Catalog number: **E1112**
- **A** plate thickness
- **B** plate thickness
- **O** sprue bushing orifice
- **R** sprue bushing radius
- Locating ring LR501 or LR504

Example: E-1112-1717 O=7/32 R=1/2





E-Series MOLD BASES

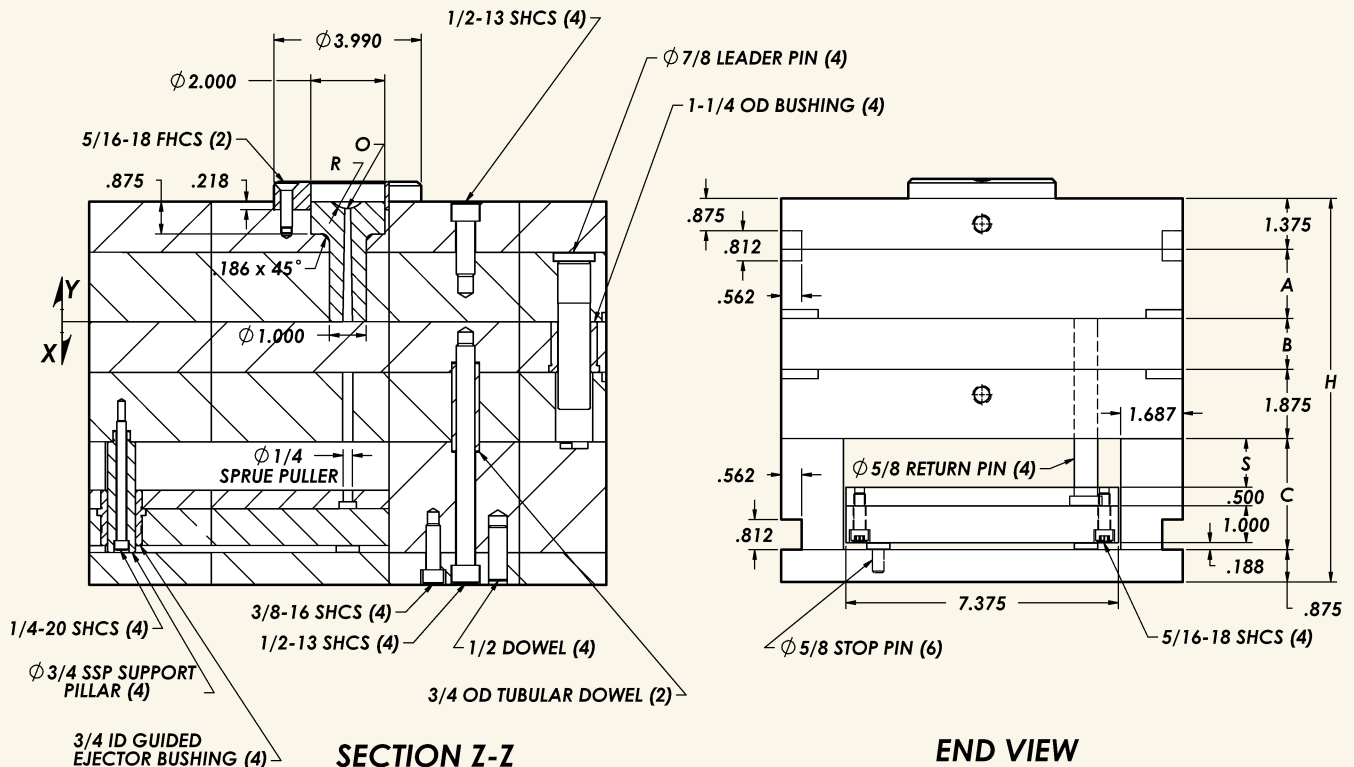
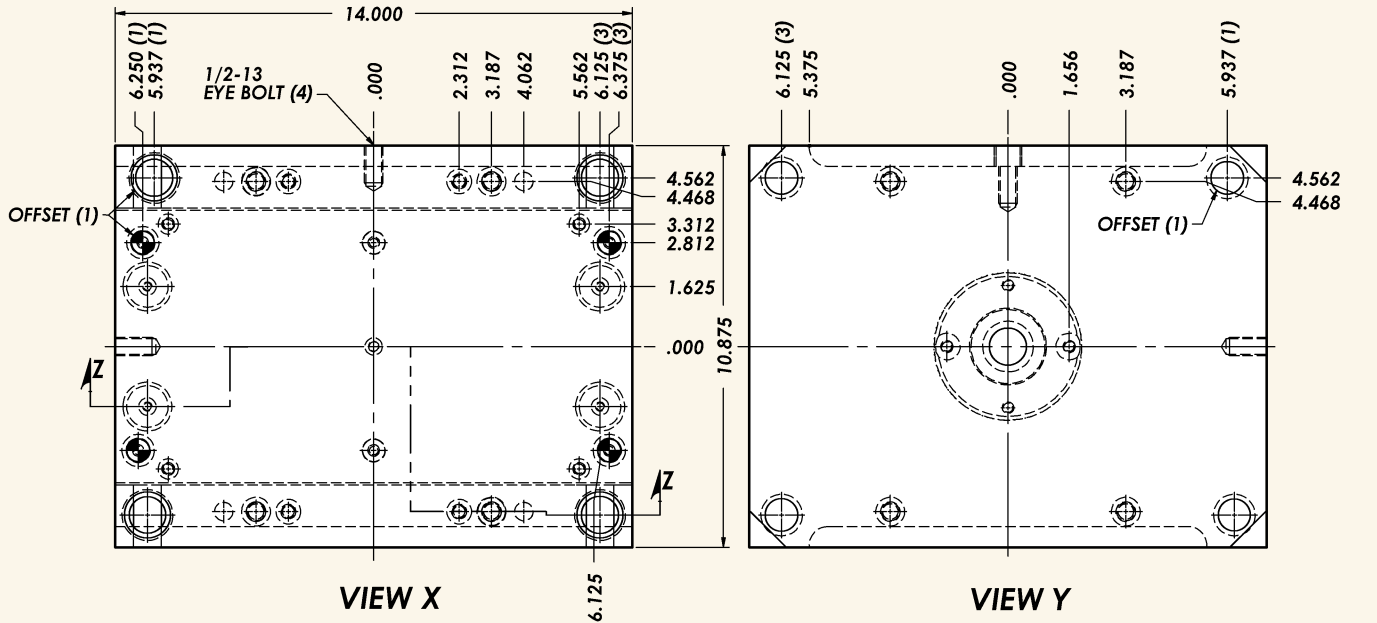


When ordering specify the following:

- Catalog number: **E1114**
- **A** plate thickness
- **B** plate thickness
- **O** sprue bushing orifice
- **R** sprue bushing radius
- Locating ring LR501 or LR504

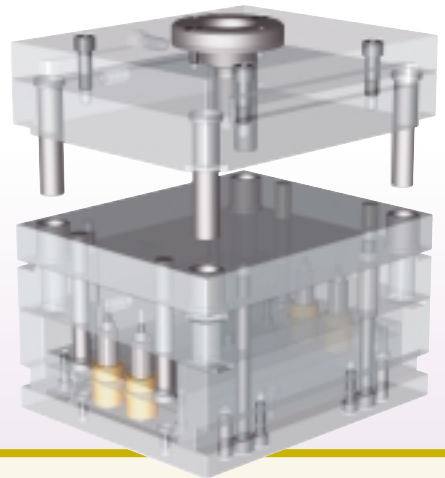
10⁷/₈ x 14

Example: E-1114-1717 O=7/32 R=1/2





E-Series MOLD BASES

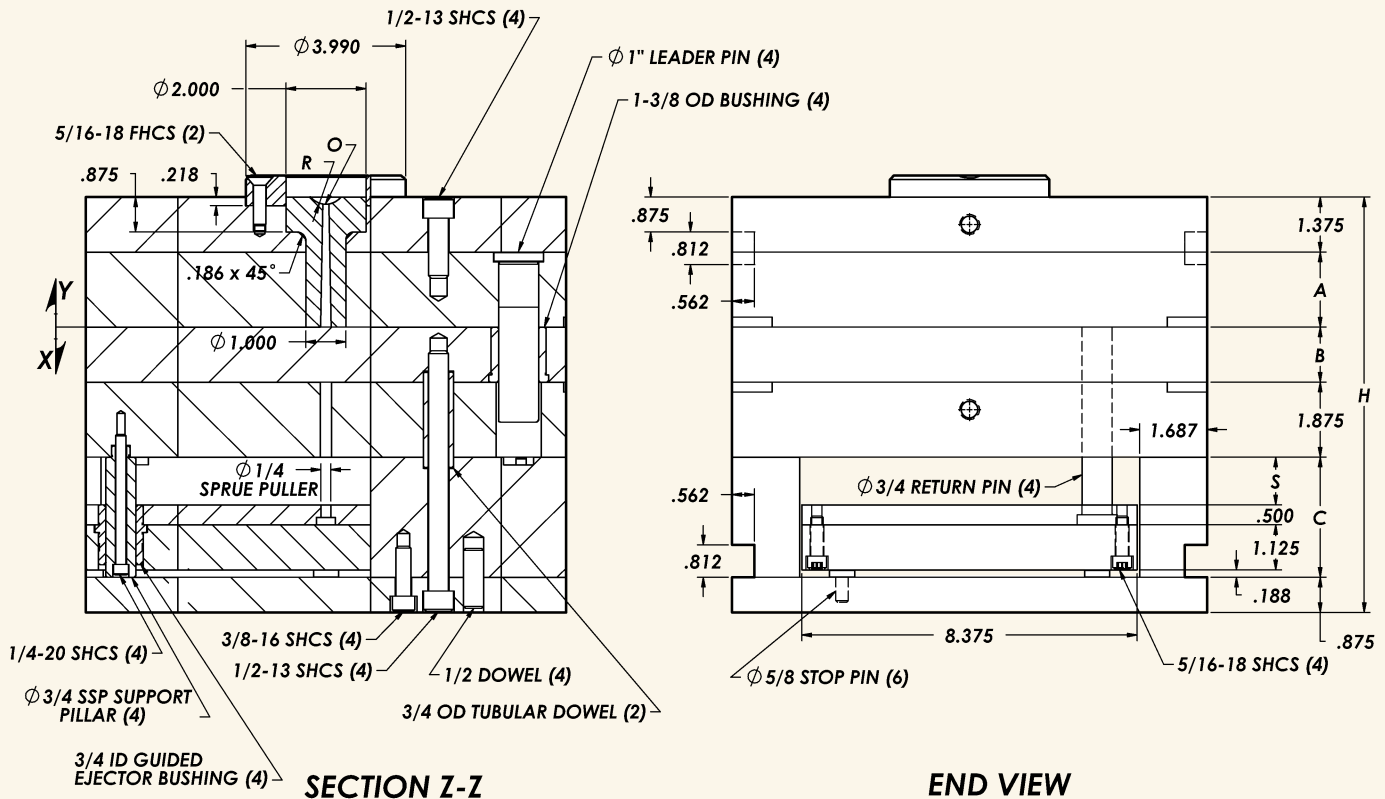
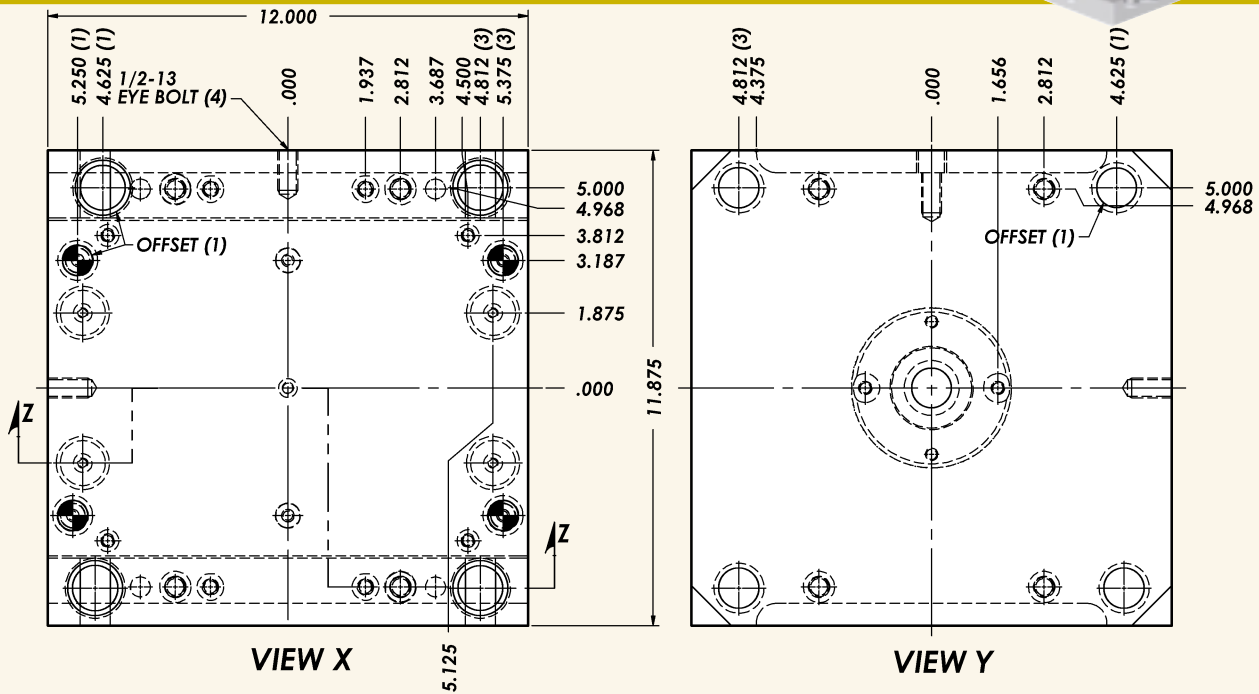


When ordering specify the following:

- Catalog number: **E1212**
- **A** plate thickness
- **B** plate thickness
- **O** sprue bushing orifice
- **R** sprue bushing radius
- Locating ring LR501 or LR504

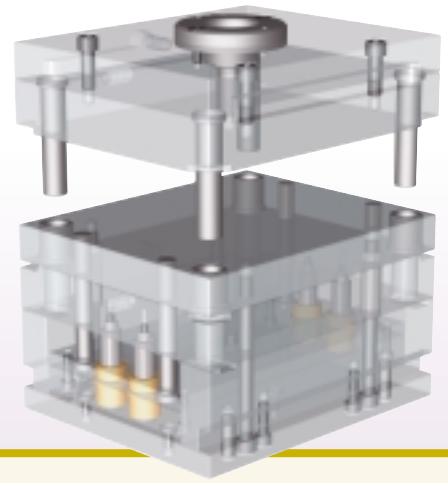
11⁷/₈ x 12

Example: E-1212-1313 O=7/32 R=1/2





E-Series MOLD BASES

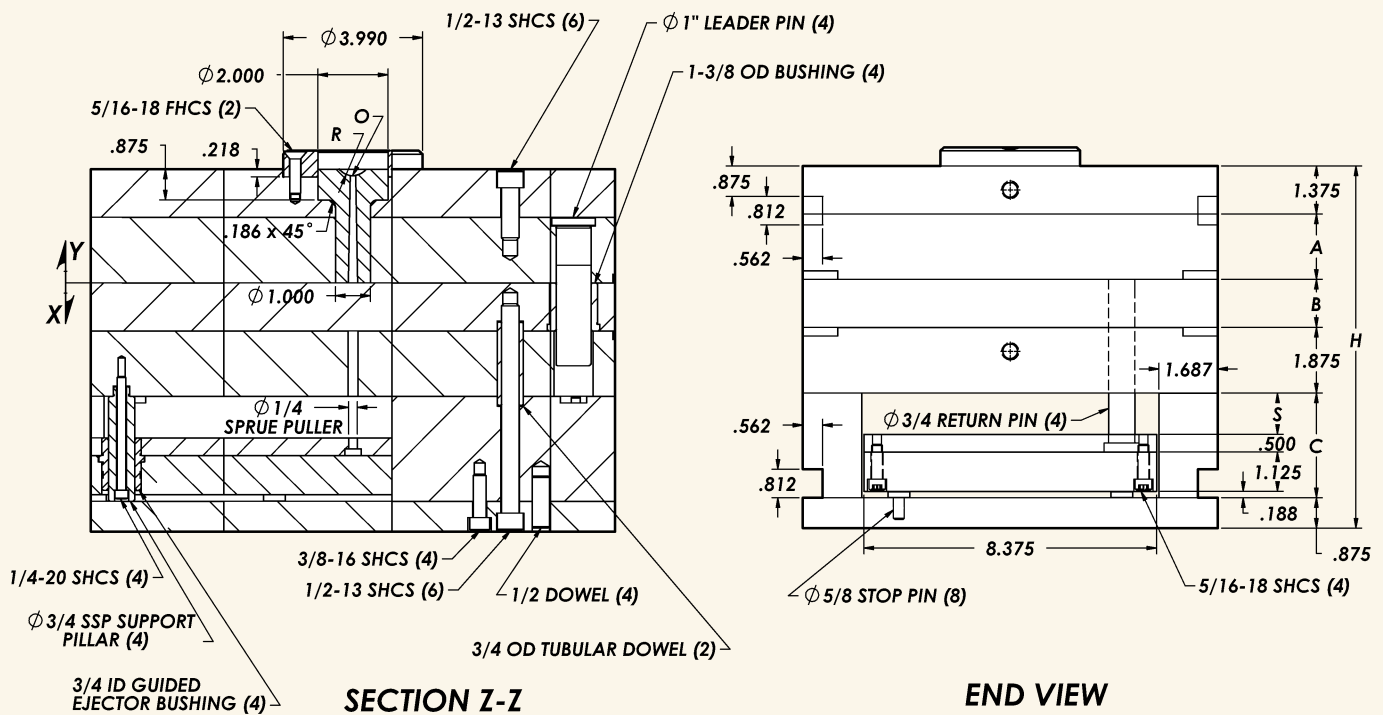
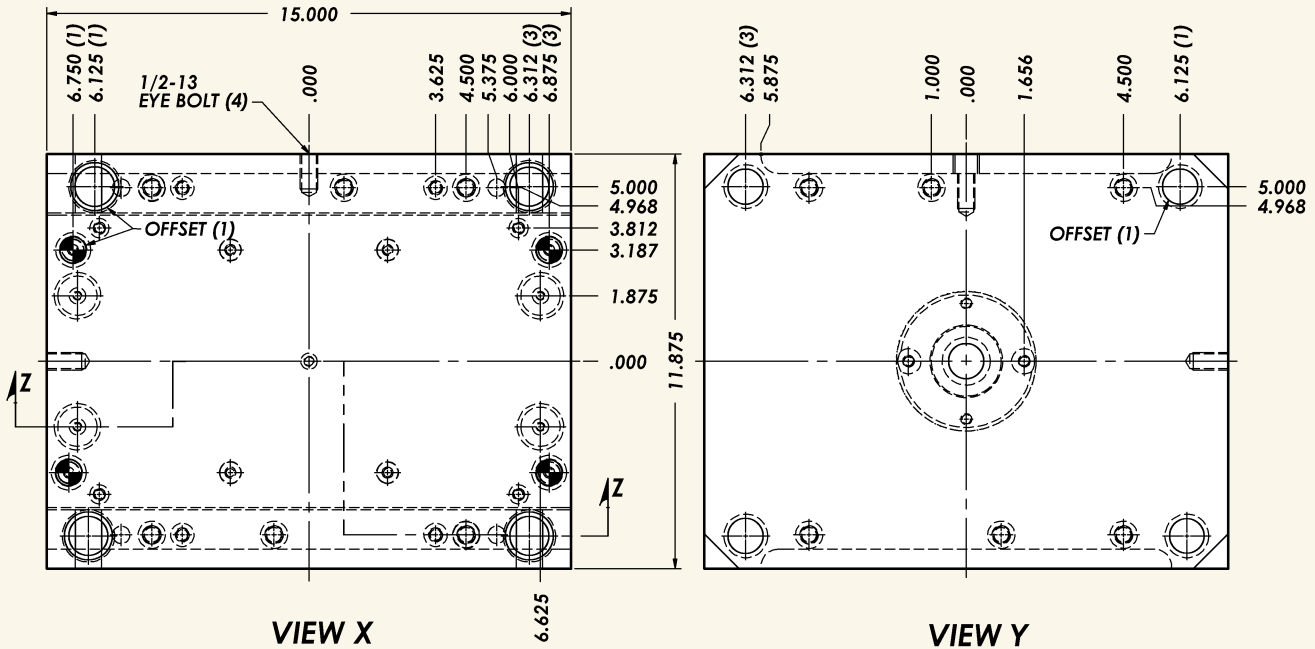


When ordering specify the following:

- Catalog number: **E1215**
- **A** plate thickness
- **B** plate thickness
- **O** sprue bushing orifice
- **R** sprue bushing radius
- Locating ring LR501 or LR504

11⁷/₈ x 15

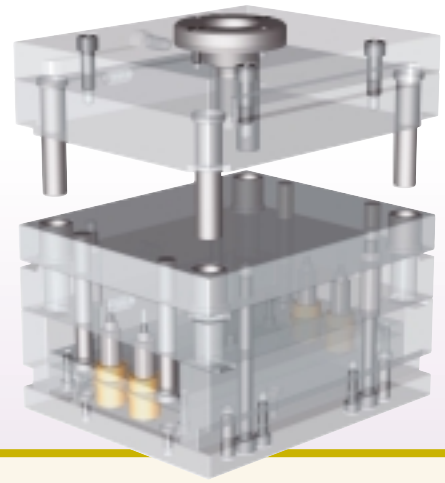
Example: E-1215-1717 O=7/32 R=1/2





E-Series MOLD BASES

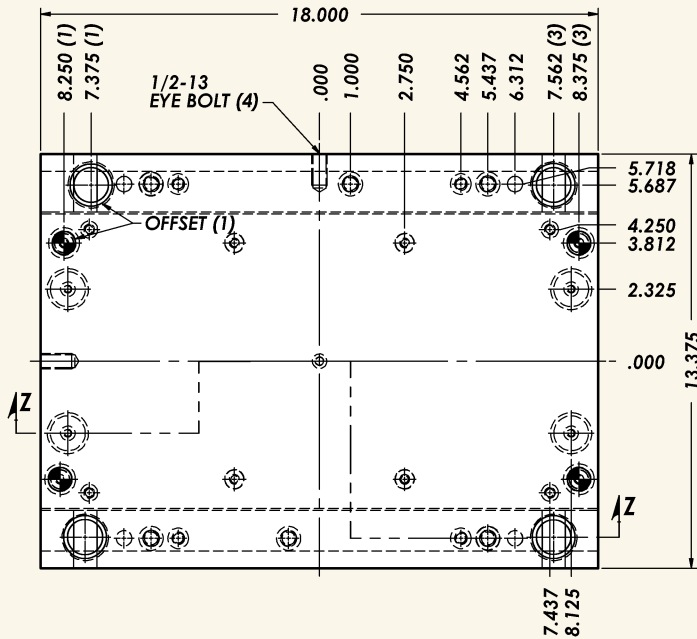
13³/₈ x 18



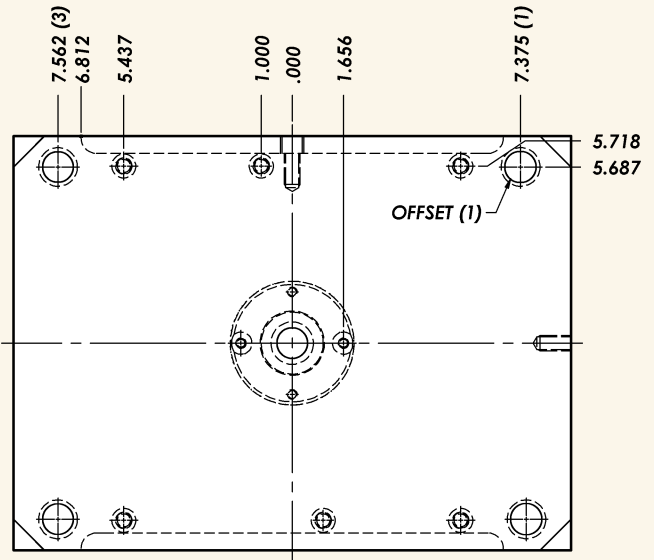
When ordering specify the following:

- Catalog number: **E1318**
- **A** plate thickness
- **B** plate thickness
- **O** sprue bushing orifice
- **R** sprue bushing radius
- Locating ring LR501 or LR504

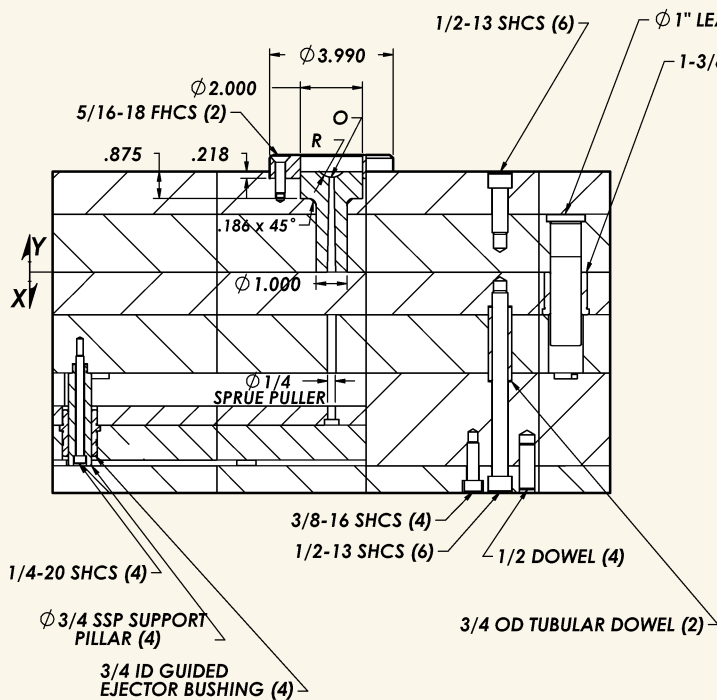
Example: E-1318-1717 O=7/32 R=1/2



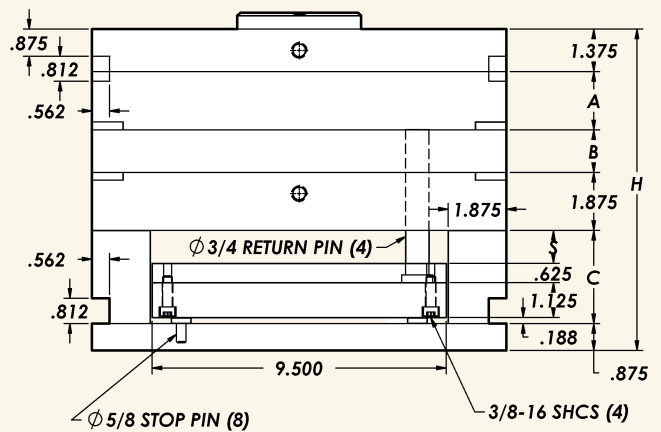
VIEW X



VIEW Y



SECTION Z-Z



END VIEW